


HOW IS THE DISTRICT GOVERNED?

The District's Board of Trustees is appointed by the eight member municipalities and one water utilities district.

- Gardiner
- Litchfield
- Manchester
- Monmouth
- Winthrop Utilities District
- Readfield
- Richmond
- Wayne
- Winthrop

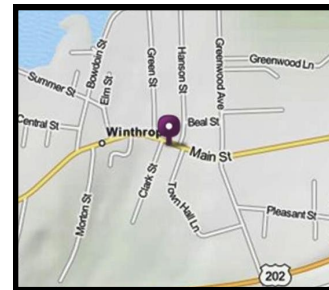
The Board of Trustees meets monthly to set policy, establish a budget and oversee staff projects and activities. The District budget is approved by the voters of all eight member towns at the annual District Budget Meeting, held in May of each year. Anyone may attend, and all registered voters from any of the member towns can vote.

The CWD is authorized to finance its operations through municipal assessments or by bonds. The District may adopt rules and regulations, and "do any and all things necessary to protect water quality and control water levels". The Board of Trustees have determined that the CWD should concentrate on voluntary compliance and local cooperation with existing state and local regulations.

	<p>Cobbossee Watershed District PO Box 418 Winthrop, ME 04364 Tel. (207) 377-2234 E-mail: cwd@fairpoint.net</p>
--	--

OFFICE LOCATION:

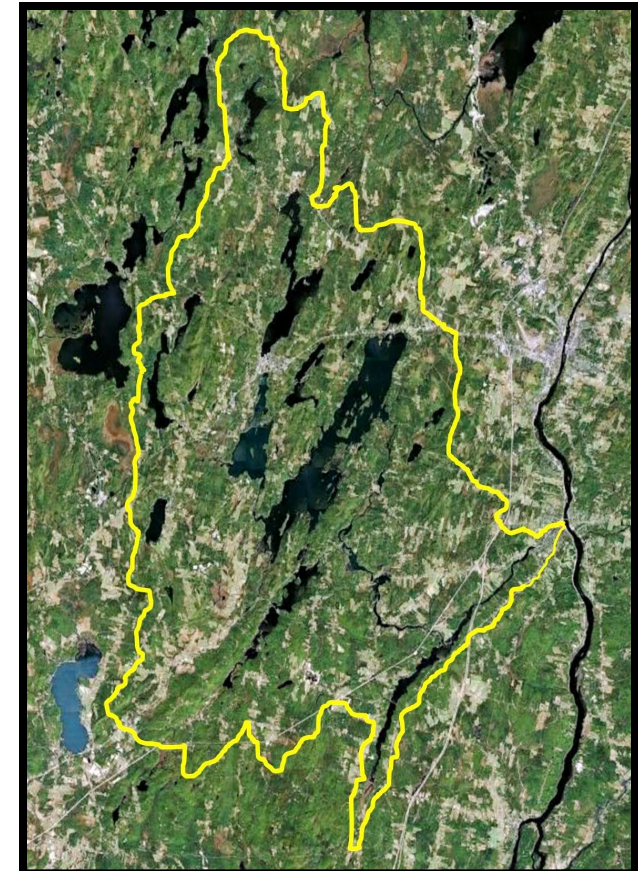
167 MAIN STREET
WINTHROP, ME



Visit Us on Facebook



*Maine's first regional lake
management district*



What is the *Cobbossee Watershed District*?

The Cobbossee Watershed District (CWD) is a 'special purpose governmental unit' (similar to a water, sanitary or school administrative district). The District was authorized by the State Legislature in 1971 and ratified by its member towns in referendum elections in 1972.

WHAT IS THE DISTRICT'S PURPOSE?

The District was formed to protect, improve, conserve and manage the lakes, ponds and streams of the Cobbossee Watershed, a 217 square mile drainage basin. The watershed is partially located in the Maine municipalities of Gardiner, West Gardiner, Richmond, Litchfield, Manchester, Monmouth, Mount Vernon, Winthrop, Wayne and Readfield.

The Cobbossee Watershed District is Maine's only 'Watershed District'.

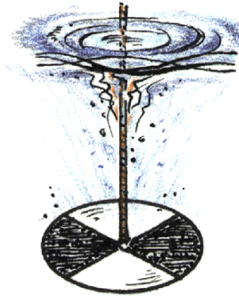


Cochnewagon Lake

WHAT DOES THE DISTRICT DO?

Water Quality

The District regularly monitors and samples twenty-six lakes and ponds throughout the watershed in an effort to protect and maintain water quality conditions. Special emphasis is given to the restoration of lakes with impaired water quality.



SECCHI DISK

Water Levels

Another major responsibility of the CWD is managing and coordinating lake water levels throughout the district with a goal of staying within the seasonal 'Water Level Standards' as well as minimizing the impact of flooding and drought conditions. The District constantly monitors precipitation and lake level measurements in order to provide dam operators with advice based on objective, technical and timely data.

Nonpoint Source Pollution Reduction

The District also works to reduce the impact of nonpoint source pollution on lakes by improving camp roads and stabilizing shoreline with a focus on reducing erosion and properly treating stormwater runoff. Additionally, CWD works with farmers to minimize pollution from agricultural practices. Much

of this work is funded by federal grants which have been awarded to the District.

Professional Services

When water quality and land use problems are identified by the CWD, the District works with property owners to correct these issues. When necessary, the District assists Maine Department of Environmental Protection (DEP) enforcement staff and local Code Enforcement Officers to stop violations.

Upon request, the Cobbossee Watershed District also reviews development proposals, subdivision plans, shoreland building permits and is able to provide technical advice to planning boards, code enforcement officers, property owners and developers.



**Rock Lined Culvert /
Vegetated Ditch**

Property owners in the watershed are strongly encouraged by the CWD to use 'Best Management Practices' (BMP's) to reduce soil erosion, stormwater runoff and phosphorus loading to lakes.

The District provides current information about water quality, lake level conditions and good land management practices.